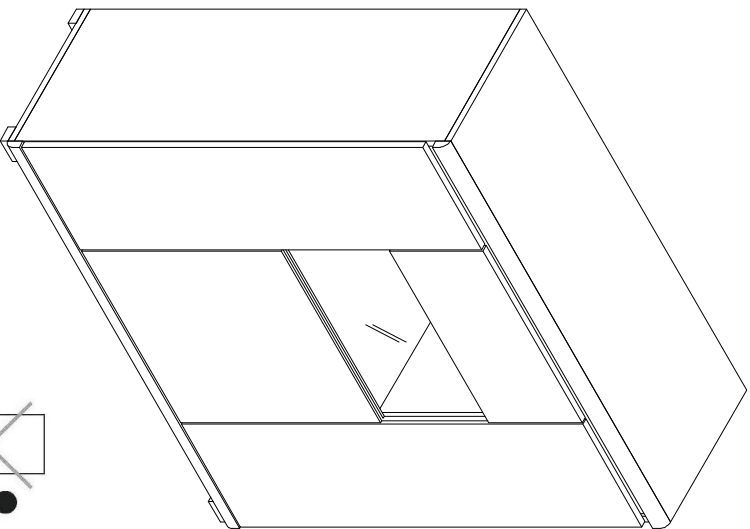


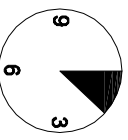
MILLO

MWT110



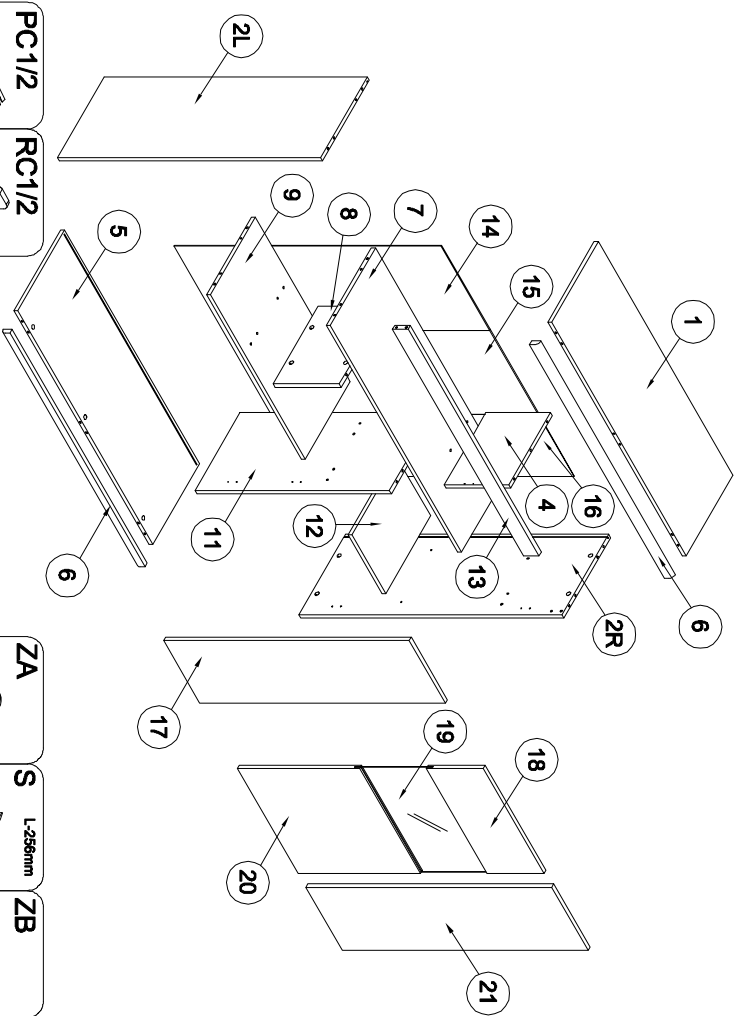
3.1.2018

- D** Montageanleitung
- FR** Notice de montage
- NL** Handleiding voor de montage
- CZ** Montážní návod
- HU** Szerelési útmutató
- TR** Montaj talimatı
- GB** Assembly Instructions
- IT** Istruzioni di montaggio
- PL** Instrukcja montażu
- SK** Návod na montáž
- RO** Instrucțiunile de montaj
- RU** Инструкции по монтажу

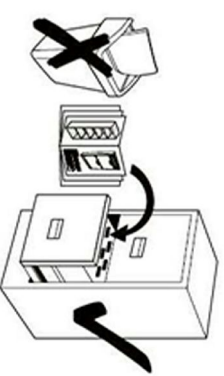
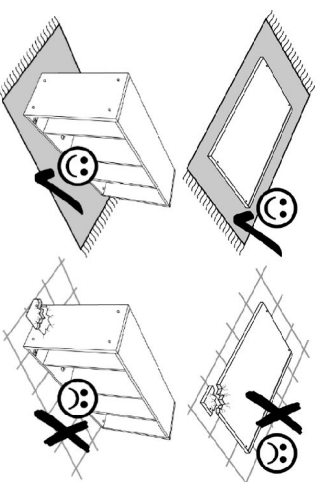


20 min.

1

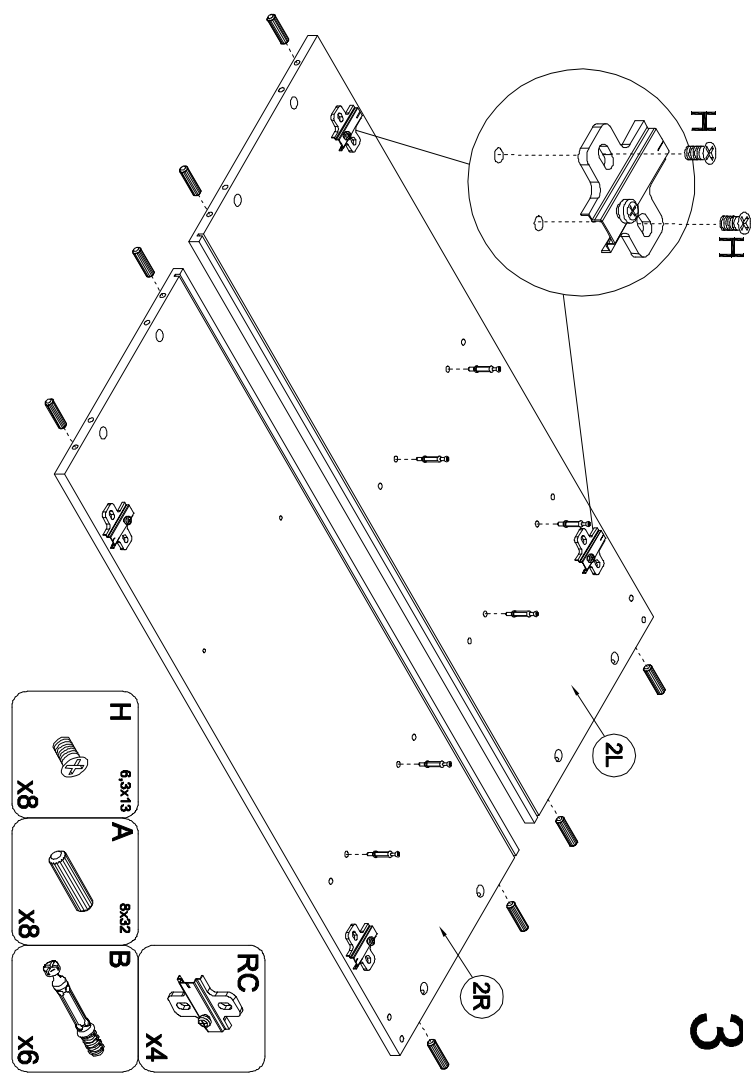


PC1/2 x3	RC1/2 x3	TA x1	N 3x20 x26	X x16	Y x6	S L-500mm x1	ZA x1	GLUE x1	H 6.3x13 x14	S L-250mm x1	ZB x4
TB x1	ZC x12	C x30	Z x30	PC x4	ND 3.5x16 x15	A 8x32 x38	B x30				

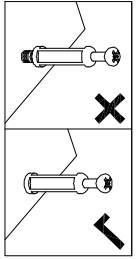


2

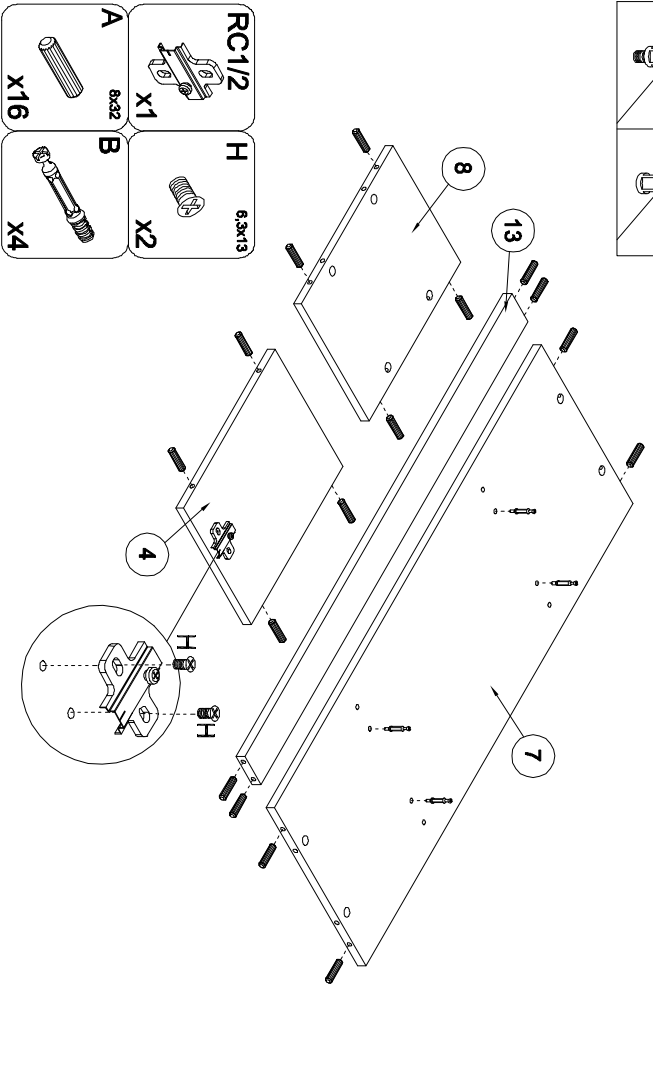
3



- | | | |
|-----------|----------|----------|
| RC | A | B |
| | | |
| X4 | X8 | X6 |
- | | |
|----------|----------|
| H | A |
| | |
| X8 | X8 |

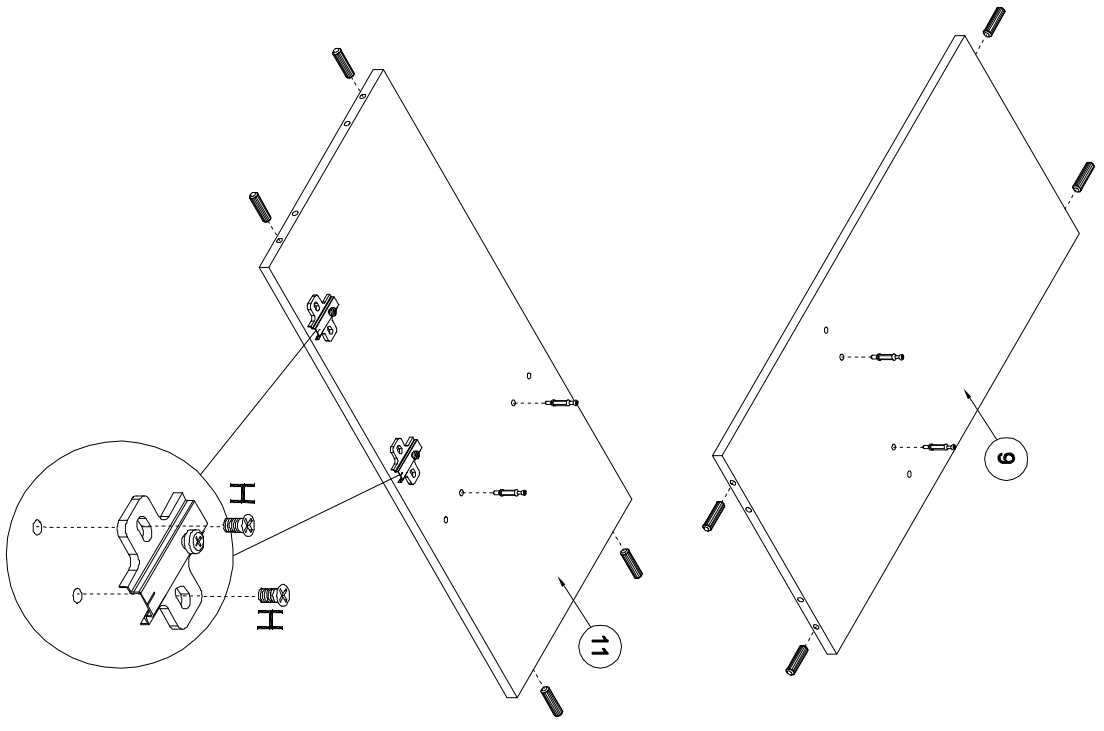


4

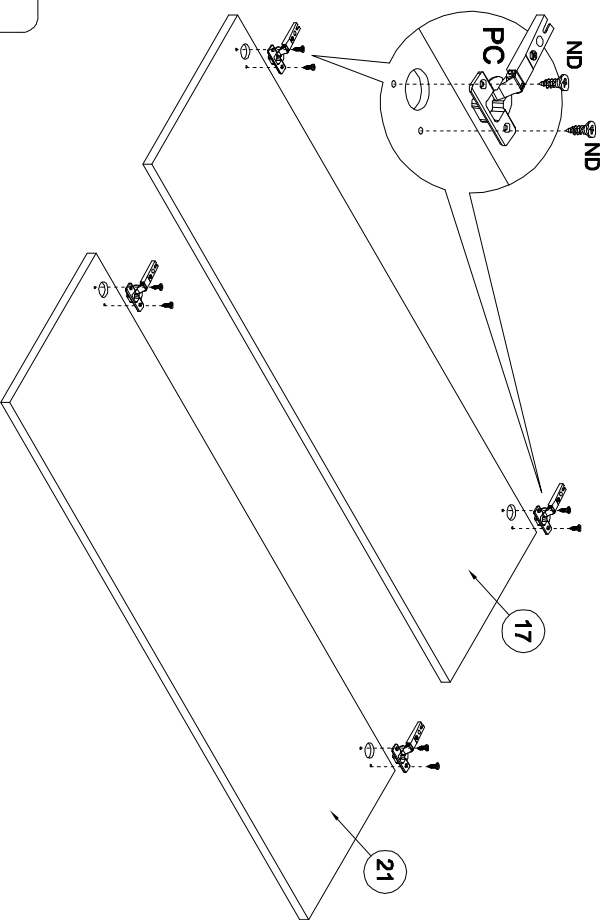
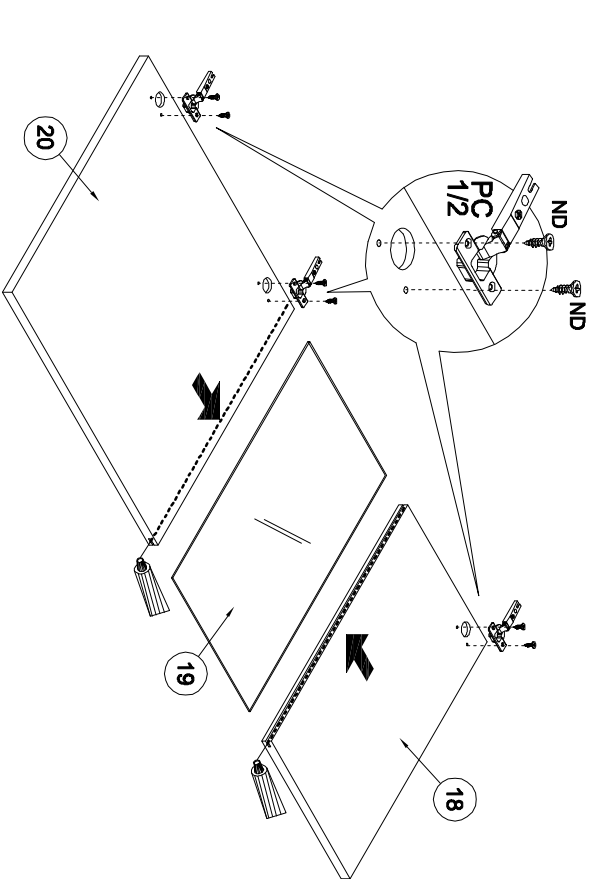


- | | |
|--------------|----------|
| RC1/2 | H |
| | |
| X1 | X2 |
- | | |
|----------|----------|
| A | B |
| | |
| X16 | X4 |

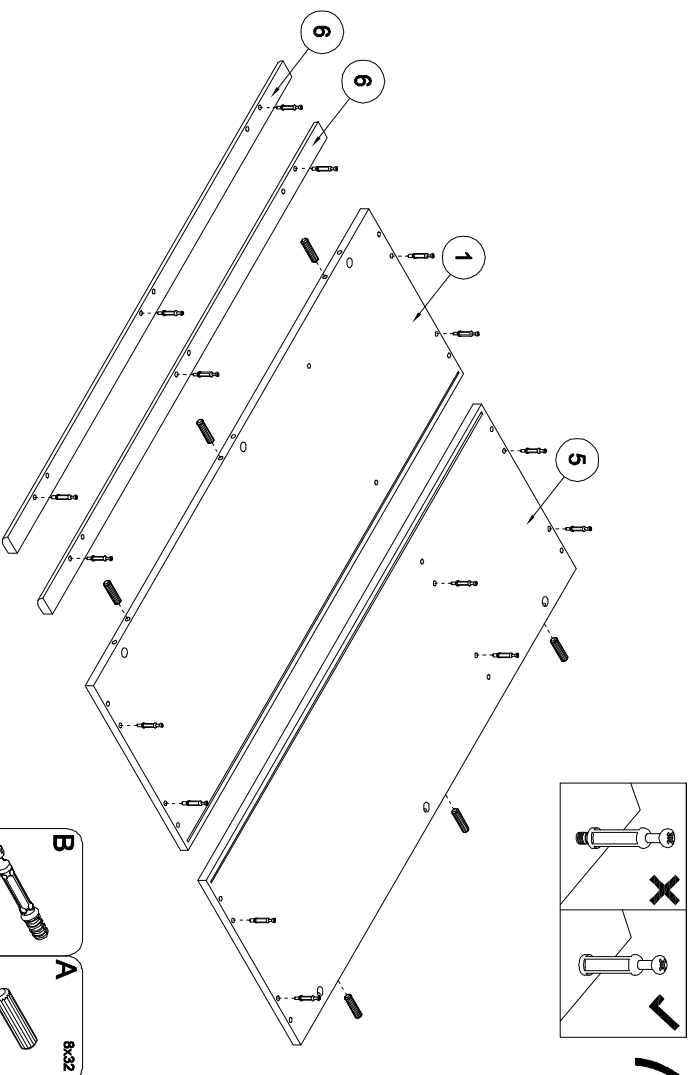
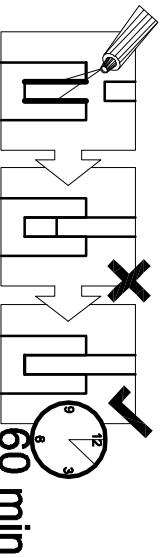
5



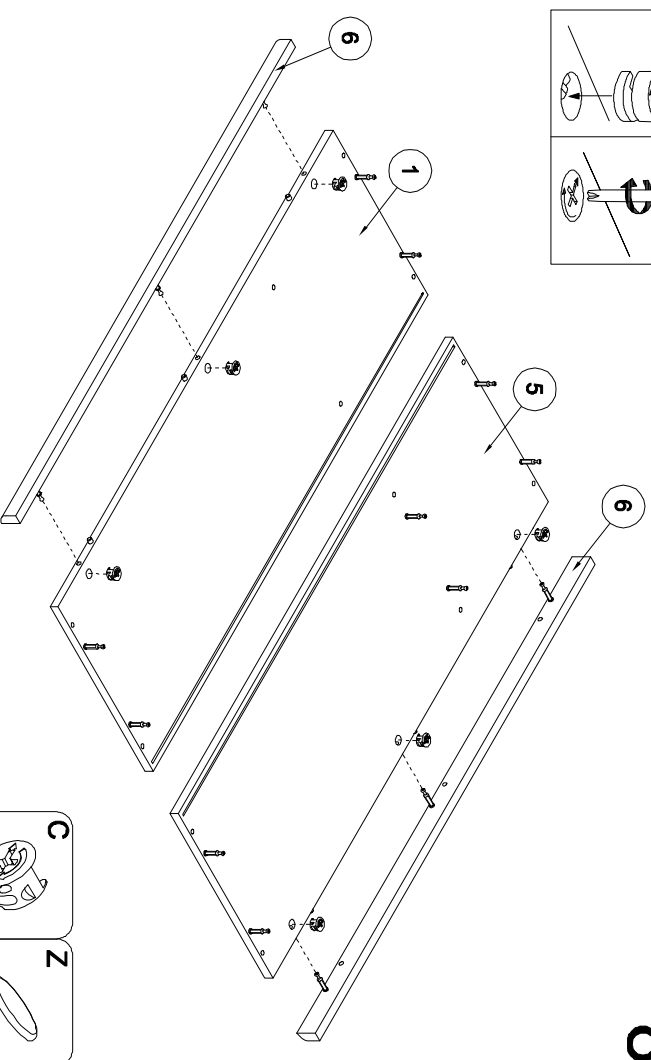
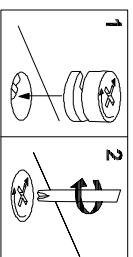
- | | |
|--------------|----------|
| RC1/2 | H |
| | |
| X2 | X4 |
- | | |
|----------|----------|
| A | B |
| | |
| X8 | X4 |



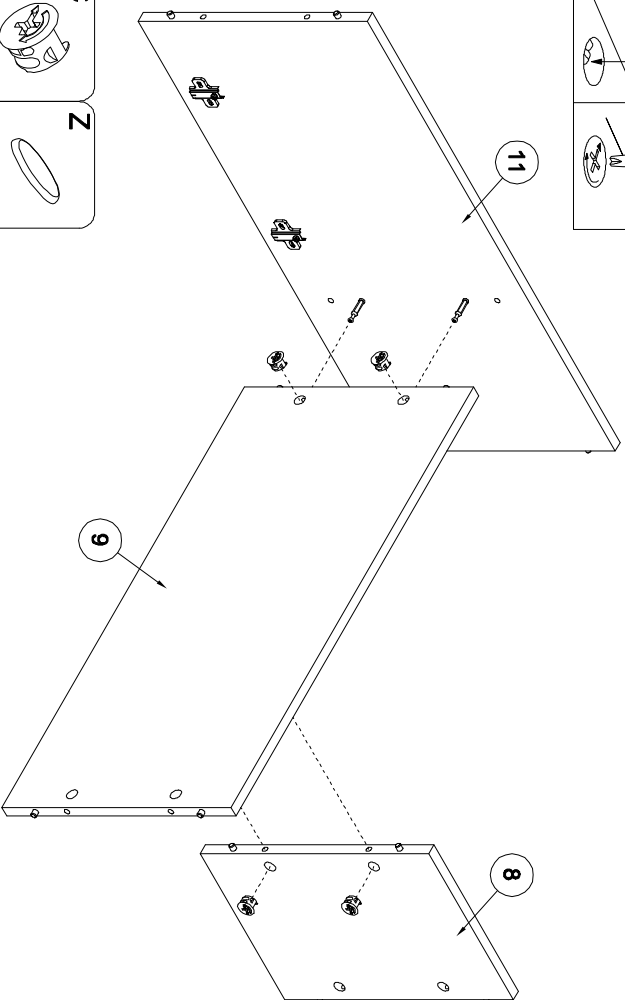
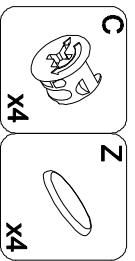
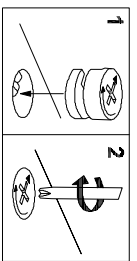
- PC1/2 X3
- PC X4
- ND 3.5x16 X14
- GLUE X1



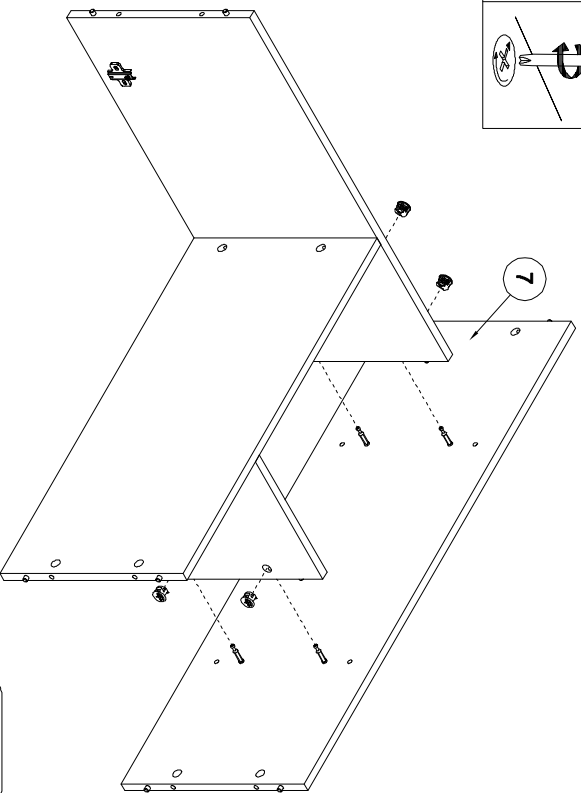
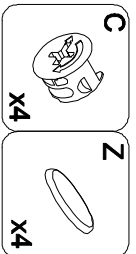
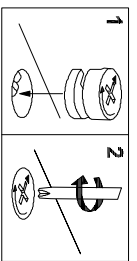
- B X16
- A 5x32 X6



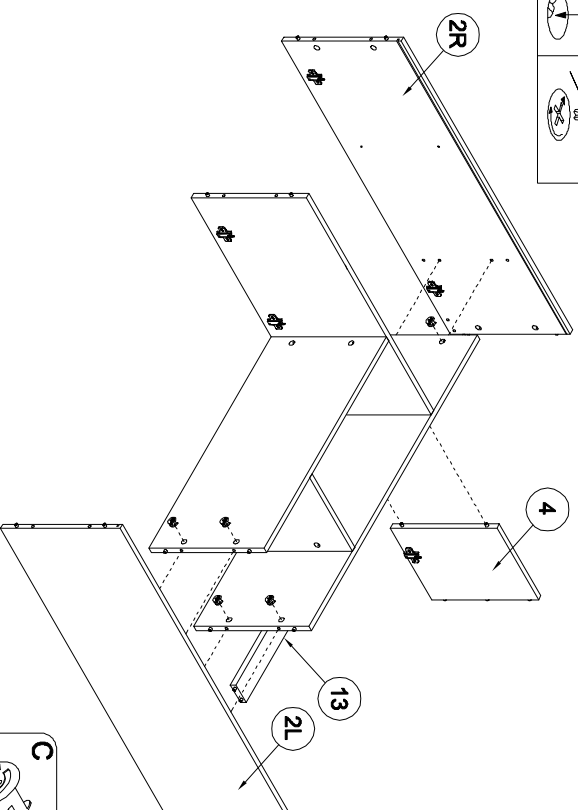
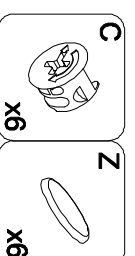
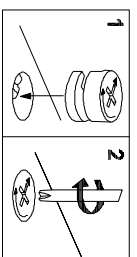
- C X6
- Z X6



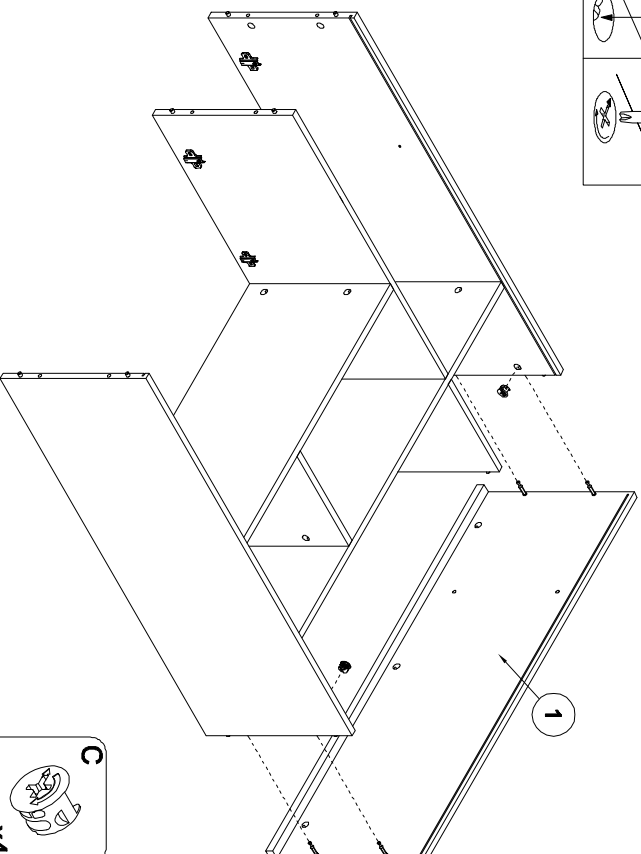
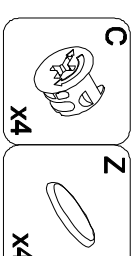
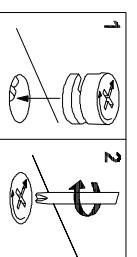
9



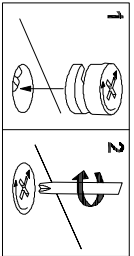
10



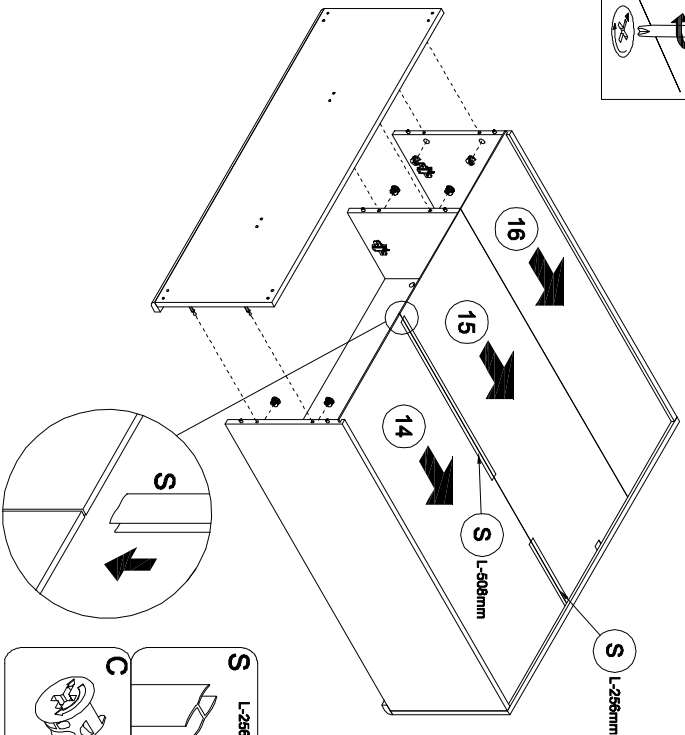
11



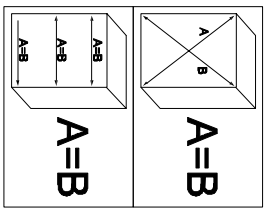
12



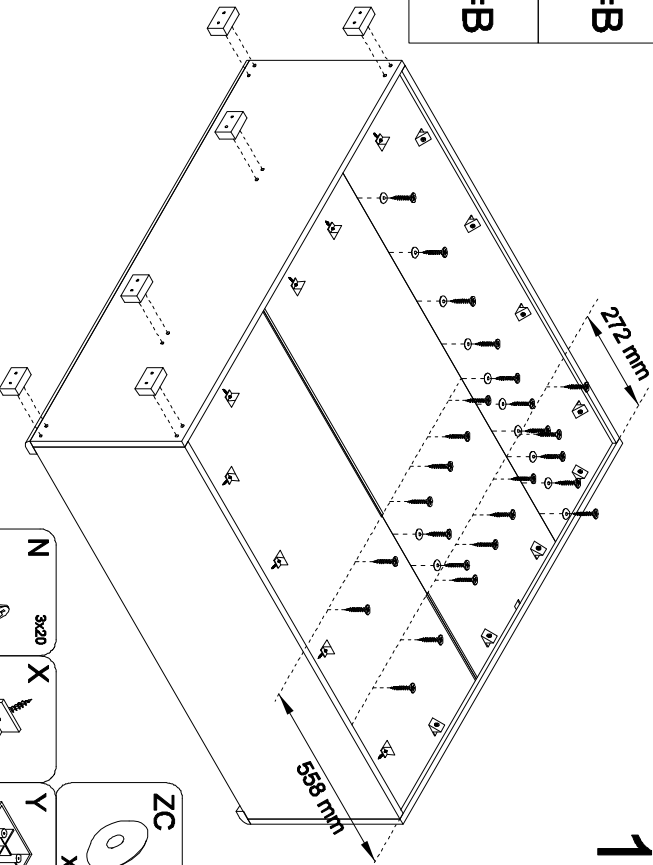
13



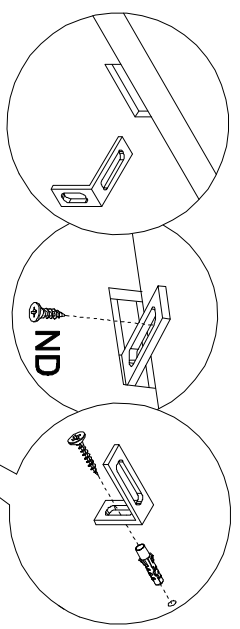
- S** L-256mm X1
- S** L-508mm X1
- C** X6
- Z** X6



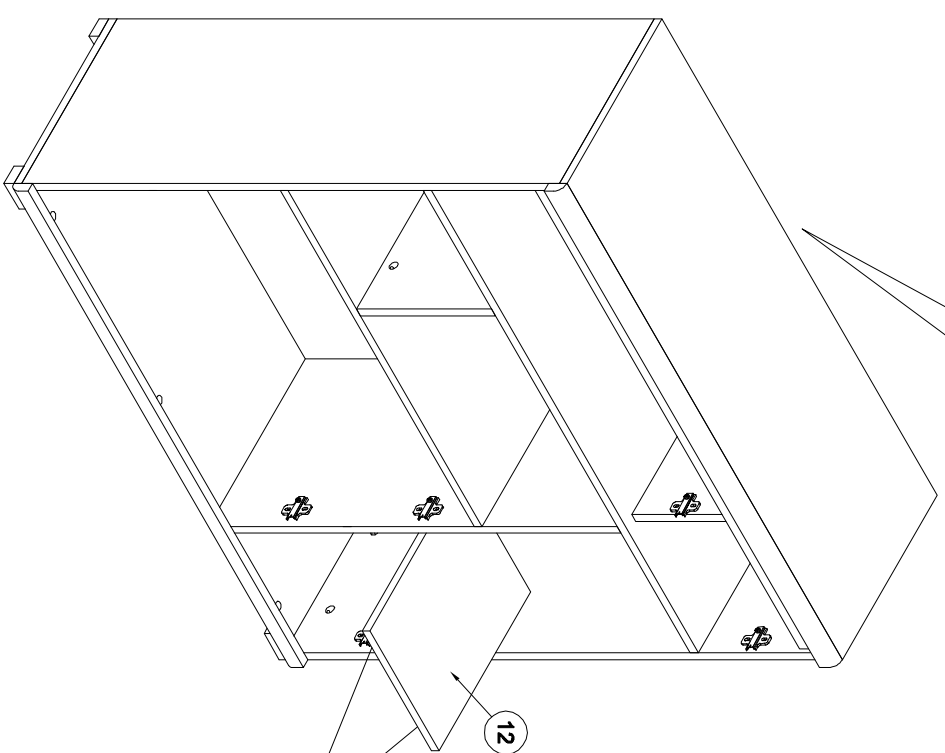
14



- ZC** X12
- Y** X6
- X** X16
- N** 3x20 X26



15



- ND** 3.5x16 X1
- TB** X1
- TA** X1
- ZB** X4

