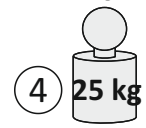


max.



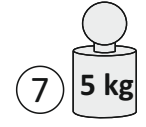
PL

D

GB

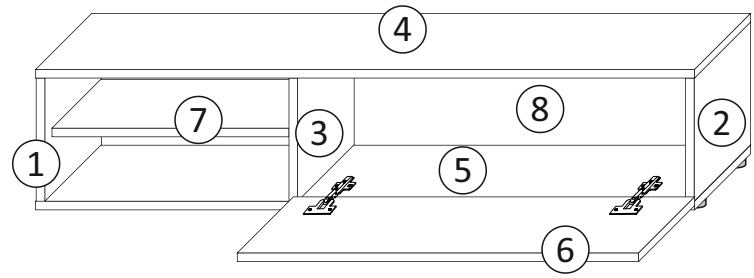
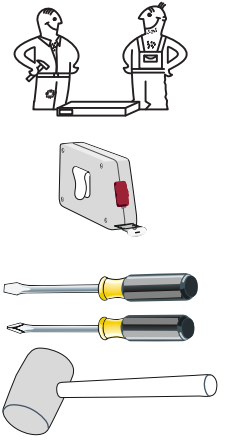
INSTRUKCJA MONTAŻOWA MONTAGEANLEITUNG ASSEMBLY INSTRUCTIONS

max.



D Sehr geehrter Kunde, sollte ein Teil fehlen oder beschädigt sein, kreuzen Sie bitte dieses deutlich auf der Montageanleitung an und schicken Sie zu uns ab.
GB Dear customer, Should there be any place missing or damaged, kindly mark this place clearly on the attached assembly instructions and return it to us.
PL Szanowny Kliencie, gdyby brakowało jakiegóś części lub byłaby uszkodzona proszę to oznaczyć krzyżykiem na instrukcji montażowej i przesać instrukcję razem z reklamacją.

Do montażu potrzebne są:
 Für die Montage dieser Type benötigen Sie:



Bag 1

K2 x12	T1 x6	M1 x6	S10 3x18 x6	P2 3,5x18 x3	W1 x4	Z1 x6	Z2 x8	K11 x6	K7 x1
----------------------	---------------------	---------------------	------------------------------	-------------------------------	---------------------	---------------------	---------------------	----------------------	---------------------

Bag 2

U1 x1	P6 4x27 x2
---------------------	-----------------------------

Bag 3

Z7 x2	S3 4x13 x4
---------------------	-----------------------------

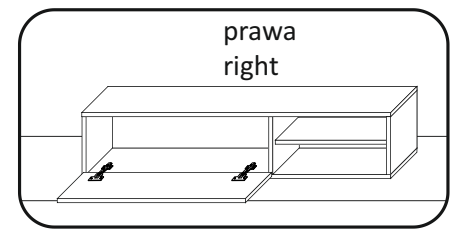
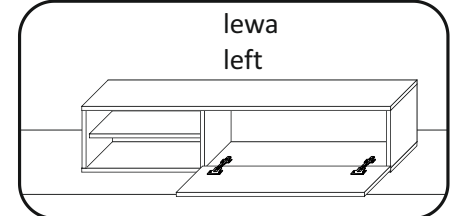
Bag 4

F1 x5	S4 4x30 x5
---------------------	-----------------------------

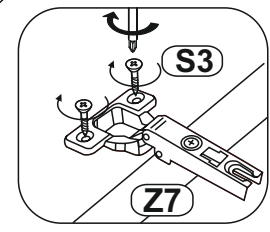
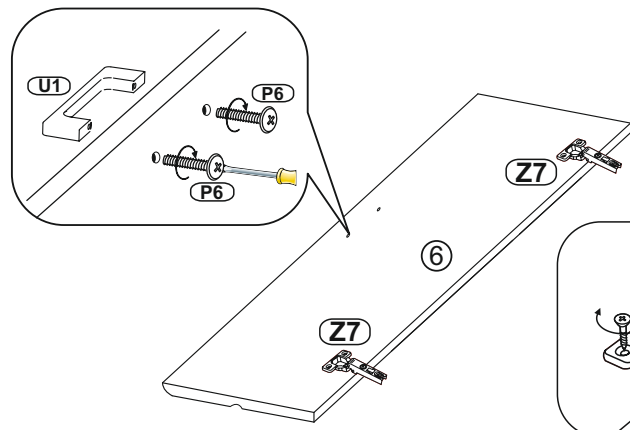
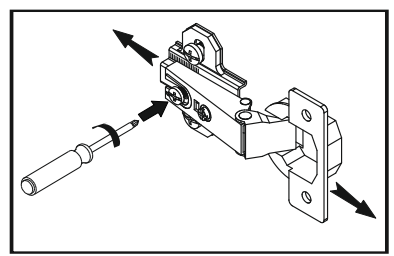
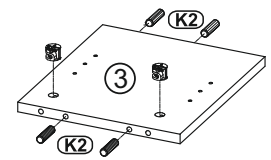
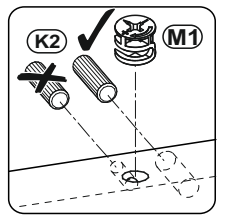
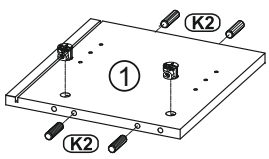
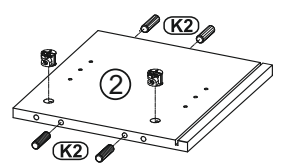
Bag 5

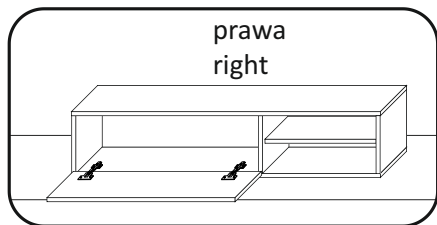
R1 x1	S1 3,5x13 x2	S2 3,5x16 x3
---------------------	-------------------------------	-------------------------------

Opcje / options

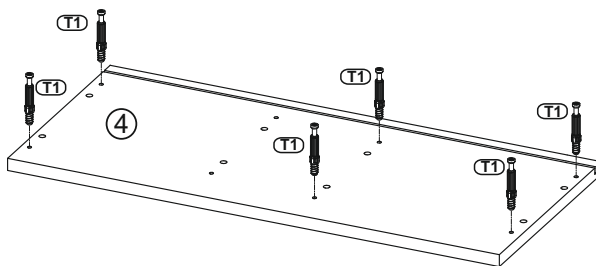
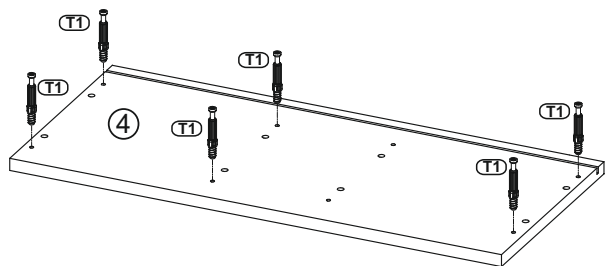
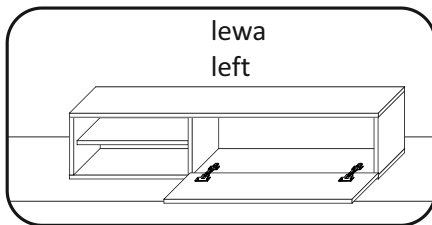


1

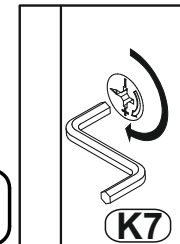
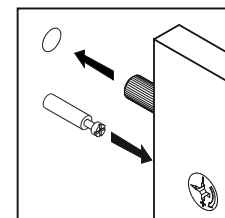
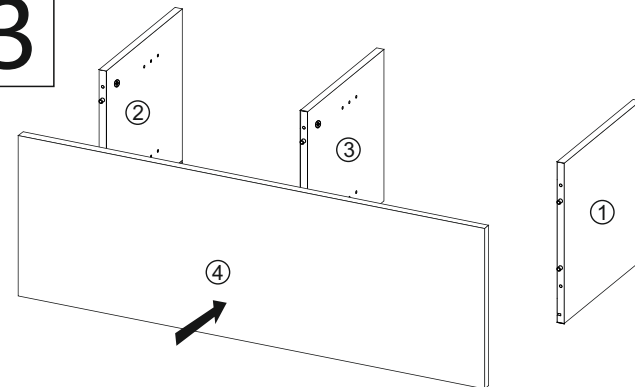




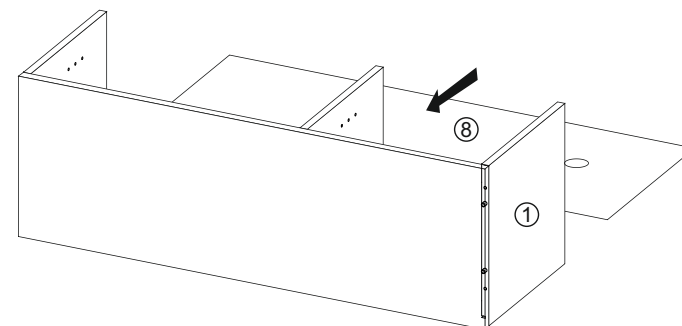
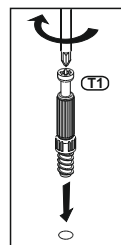
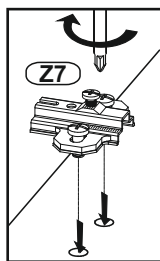
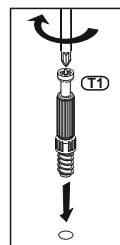
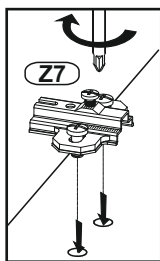
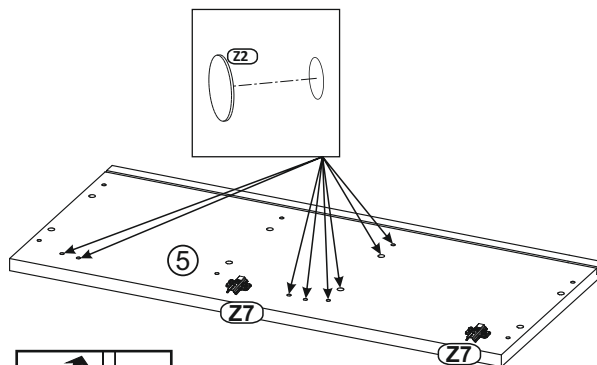
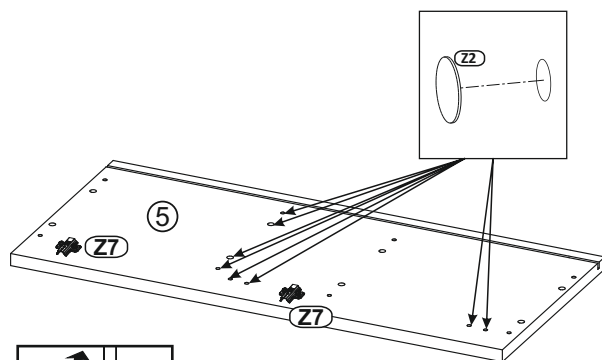
2



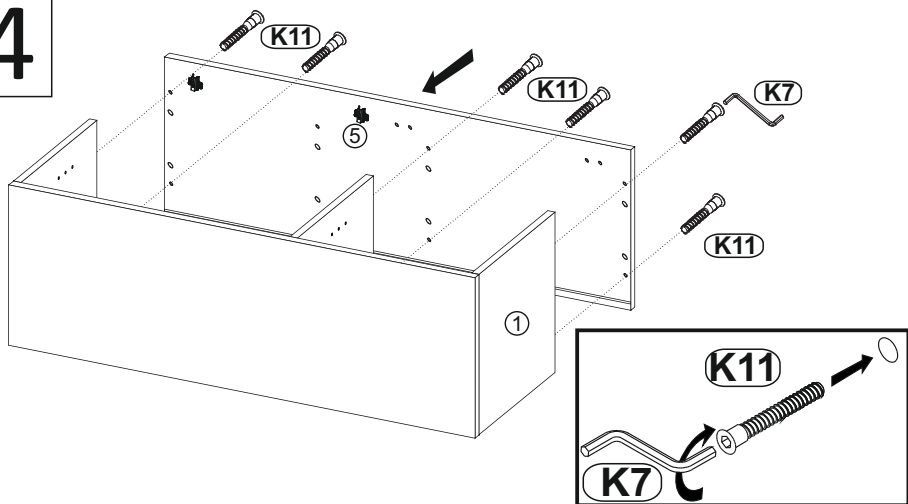
3



4



4



5

