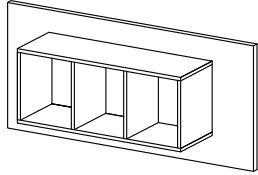
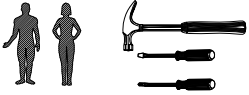


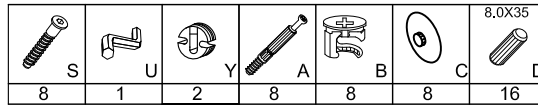
GORDIA PANEL 150



Instrukcja montażu
Assembly instructions



No.	Stc.	L	W	T
1	1	1500	460	16
2	1	1340	220	16
3	1	268	220	16



UWAGA ! WAŻNE !
KOLKI WBIJAĆ JAK NA
PONIŻSZYM RYSUNKU
W KRAWĘDZ ELEMENTU
11.0 mm

UWAGA !
ATTENTION !

