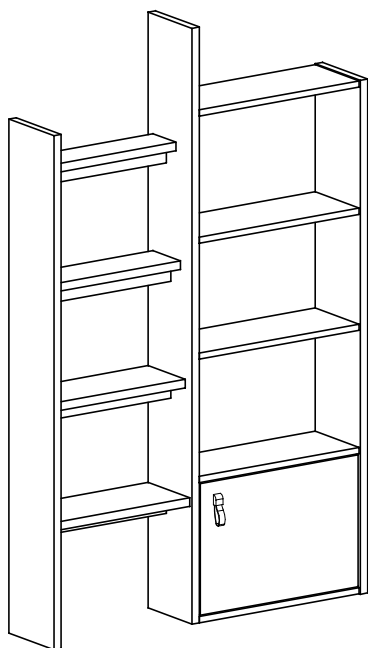


system
KOMI

KM 15 2/3

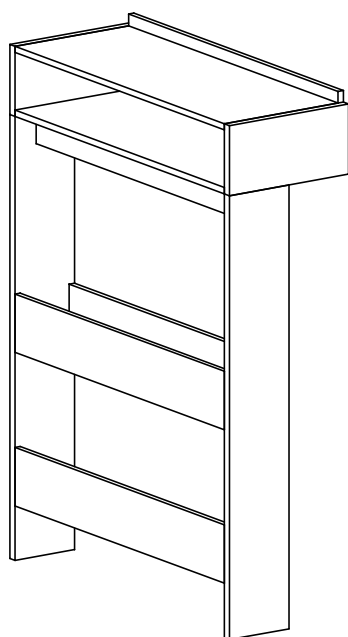
VII

VIII



Lp	WYMIARY	szt
27	132 x 19,5	1
28	153 x 19	1
29	132 x 19,5	1
30	48,4 x 19	5
31	40 x 10	1
32	40 x 12	1
33	40 x 16	1
34	40 x 18	1
35	40 x 4	4
36	33,8 x 47,8	1
37	51,3 x 132	1

IX



Lp	WYMIARY	szt
38	90,6 x 21	1
39	90,6 x 34,3	1
40	36 x 18	1
41	36 x 18	1
42	114 x 18	1
43	114 x 18	1
44	90,6 x 8	1
45	90,6 x 15	2
56	90,6 x 34,3	1
58	90,6 x 15	1